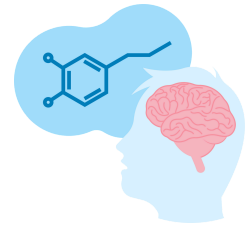


**PARKINSON'S DISEASE  
RESOURCE LIST**



<b>SOURCE</b>	<b>INFO</b>
<a href="#"><u>Parkinson's Body and Mind</u></a>	Offer on-site and virtual programs, support groups, information and education about PD
<a href="#"><u>Community Health at Greenwich Hospital</u></a>	Has exercise programs and support groups and they also refer to PBM
<a href="#"><u>American Parkinson's Disease Association- APDA-CT Chapter</u></a>	This lists resources for all towns in CT. The Greenwich Hospital program above is listed here.
<a href="#"><u>American Parkinson's Disease Association – APDA - NY Chapter</u></a>	This lists resources for all towns in CT. The Greenwich Hospital program above is listed here
<a href="#"><u>Parkinson's Foundation – NY &amp; NJ</u></a>	Support groups by region
<a href="#"><u>The Michael J. Fox Foundation</u></a>	List of support groups based on your needs
<a href="#"><u>Parkinson's Disease Rehabilitation at Burke</u></a>	Enhance walking, speech and other abilities affected by Parkinson's disease
<a href="#"><u>Northern Westchester Hospital LSVT Big and LSVT Loud therapies</u></a>	Promotes early adoption of exercise-based physical and occupational therapy to develop healthy habits
<a href="#"><u>Rock Steady Boxing in White Plains</u></a>	Weekly classes to help fight against the progression of PD